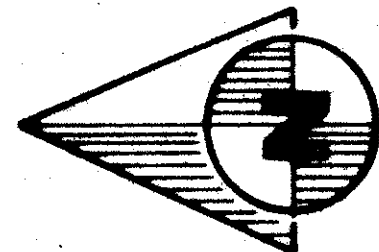


THE FAIRWAYS OF BOCA LAGO

BEING A REPLAT OF A PART OF THE "REPLAT OF BOCA LAGO (P.U.D.)" AS RECORDED IN PLAT BOOK 31, PAGES 62-71 (INCLUSIVE), PUBLIC RECORDS, PALM BEACH COUNTY, FLORIDA, AND LYING IN SECTION 20, TWP. 47 SO., RGE 42 EAST.



LAKE

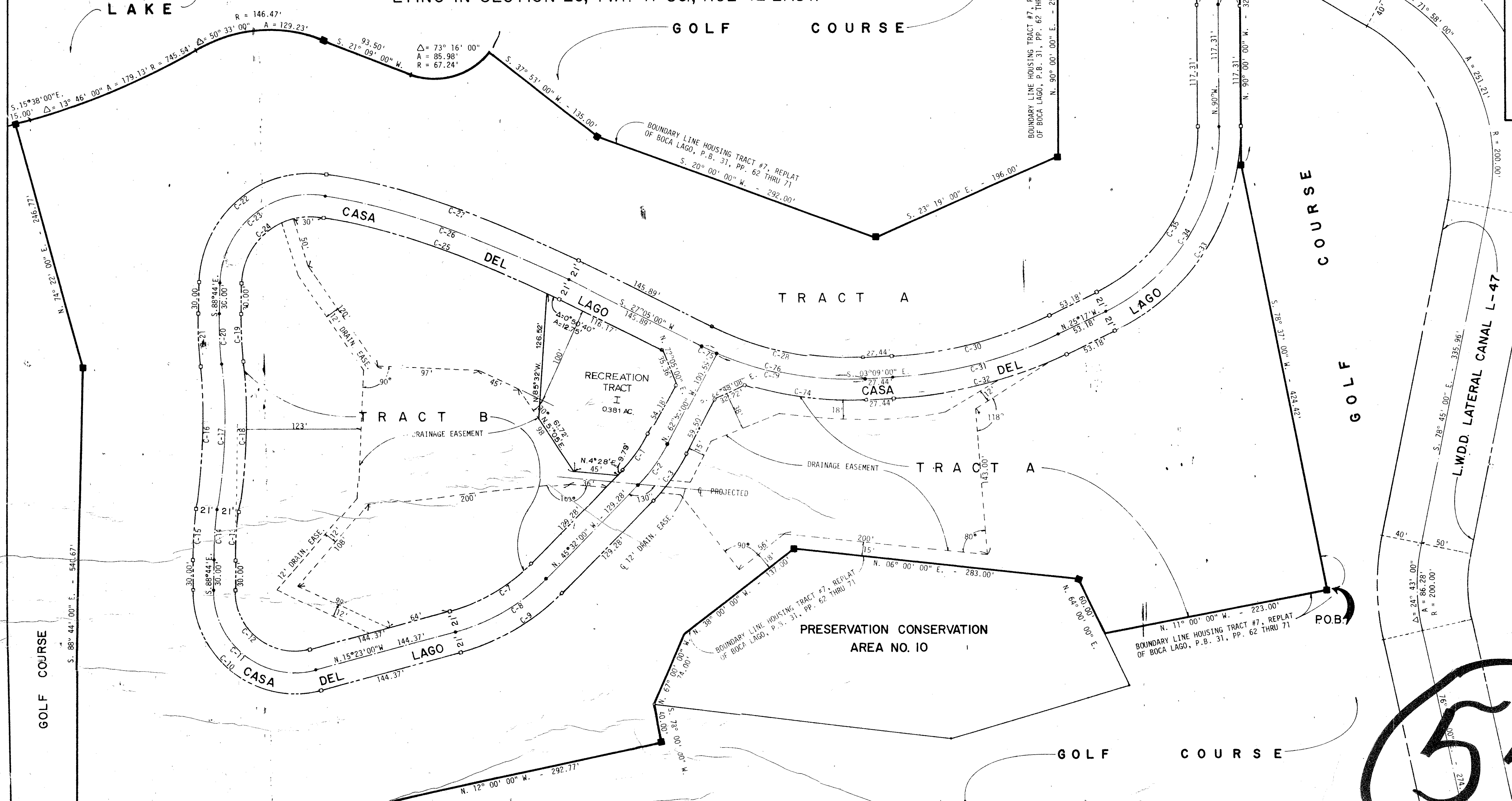
GOLF COURSE

MATCH LINE "A"

MATCH LINE "A"

37

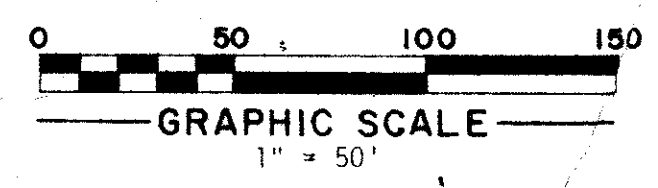
STATE OF FLORIDA
COUNTY OF PALM BEACH
THIS PLAT WAS FILED FOR RECORD AT _____ M. THIS _____ TH DAY OF _____ AD., 1977 AND DULY RECORDED IN PLAT BOOK _____ AND _____ ON PAGES _____ AND _____
JOHN B. DUNKLE, CLERK
CIRCUIT COURT
BY: _____ DC



54

CURVE DATA TABLE

C NO.	CENT. ANG.	RADIUS	ARC	CHORD	TANGENT	C NO.	CENT. ANG.	RADIUS	ARC	CHORD	TANGENT
C-1	17°23'00"	142.00'	43.08'	42.92'	21.71'	C-22	99°23'00"	109.00'	189.07'	166.24'	128.49'
C-2	17°23'00"	163.00'	49.45'	49.26'	24.92'	C-23	99°23'00"	88.00'	152.64'	134.21'	103.73'
C-3	17°23'00"	163.00'	55.83'	55.61'	28.00'	C-24	99°23'00"	67.00'	116.22'	102.18'	78.98'
C-4	17°08'00"	170.00'	44.56'	44.39'	22.84'	C-25	16°26'00"	865.13'	248.13'	247.28'	124.92'
C-5	17°08'00"	170.00'	57.28'	57.08'	28.11'	C-26	16°26'00"	886.13'	254.66'	253.29'	127.96'
C-6	17°08'00"	191.00'	57.28'	56.90'	28.11'	C-27	16°26'00"	865.13'	267.49'	266.29'	130.04'
C-7	30°09'00"	179.00'	44.39'	44.11'	48.11'	C-28	16°26'00"	865.13'	267.49'	266.29'	130.04'
C-8	30°09'00"	200.00'	44.39'	44.11'	53.71'	C-29	16°26'00"	865.13'	267.49'	266.29'	130.04'
C-9	30°09'00"	221.00'	44.39'	44.11'	59.33'	C-30	22°08'00"	430.00'	158.00'	157.02'	80.00'
C-10	106°39'00"	101.00'	168.00'	162.01'	135.62'	C-31	22°08'00"	430.00'	166.11'	165.08'	84.10'
C-11	106°39'00"	80.00'	148.91'	147.43'	107.43'	C-32	22°08'00"	451.00'	174.22'	173.14'	88.21'
C-12	106°39'00"	59.00'	109.82'	94.14'	79.23'	C-33	64°43'00"	221.00'	249.62'	236.56'	140.03'
C-13	08°02'00"	360.00'	77.53'	47.99'	47.99'	C-34	64°43'00"	200.00'	225.90'	214.00'	126.72'
C-14	08°02'00"	360.00'	60.47'	50.43'	47.99'	C-35	64°43'00"	179.00'	202.18'	190.91'	114.49'
C-15	08°02'00"	360.00'	53.42'	53.38'	47.99'	C-36	64°43'00"	241.13'	106.50'	104.99'	54.41'
C-16	16°04'00"	174.96'	138.79'	138.39'	69.85'	C-37	25°20'00"	262.13'	106.50'	104.99'	54.41'
C-17	16°04'00"	151.96'	144.68'	144.21'	72.82'	C-38	25°20'00"	283.13'	125.19'	124.11'	63.63'
C-18	16°04'00"	150.57'	150.08'	150.08'	75.78'	C-39	20°27'44"	342.00'	122.14'	121.49'	61.73'
C-19	08°02'00"	339.00'	47.53'	47.49'	23.80'	C-40	02°54'28"	321.00'	16.29'	16.29'	8.15'
C-20	08°02'00"	360.00'	50.47'	50.43'	25.78'	C-41	30°14'00"	321.00'	169.38'	167.42'	86.71'
C-21	08°02'00"	381.00'	53.42'	53.38'	25.78'						



PRESERVATION CONSERVATION AREA NO. 9

THIS INSTRUMENT WAS PREPARED BY ROBERT J. WHIDDEN IN THE OFFICES OF BENCH MARK LAND SURVEYING AND MAPPING, INC., 2300 PALM BEACH LAKES BLVD., SUITE 109, WEST PALM BEACH, FLORIDA, PHONE 689-2111.

20/47/42

CONRAD W. SCHIEFER CONSULTING ENGINEERS INC.
P.L.L.C.
FLORIDA

33/37

THE FAIRWAYS OF BOCA LAGO

DESIGNED	DRAWN	CHECKED	DATE
C.G.	MWG	RW	NOV. '76
SCALE	APPROVED	FILE NO.	SHEET OF
1" = 50'	RW	3005	2 4